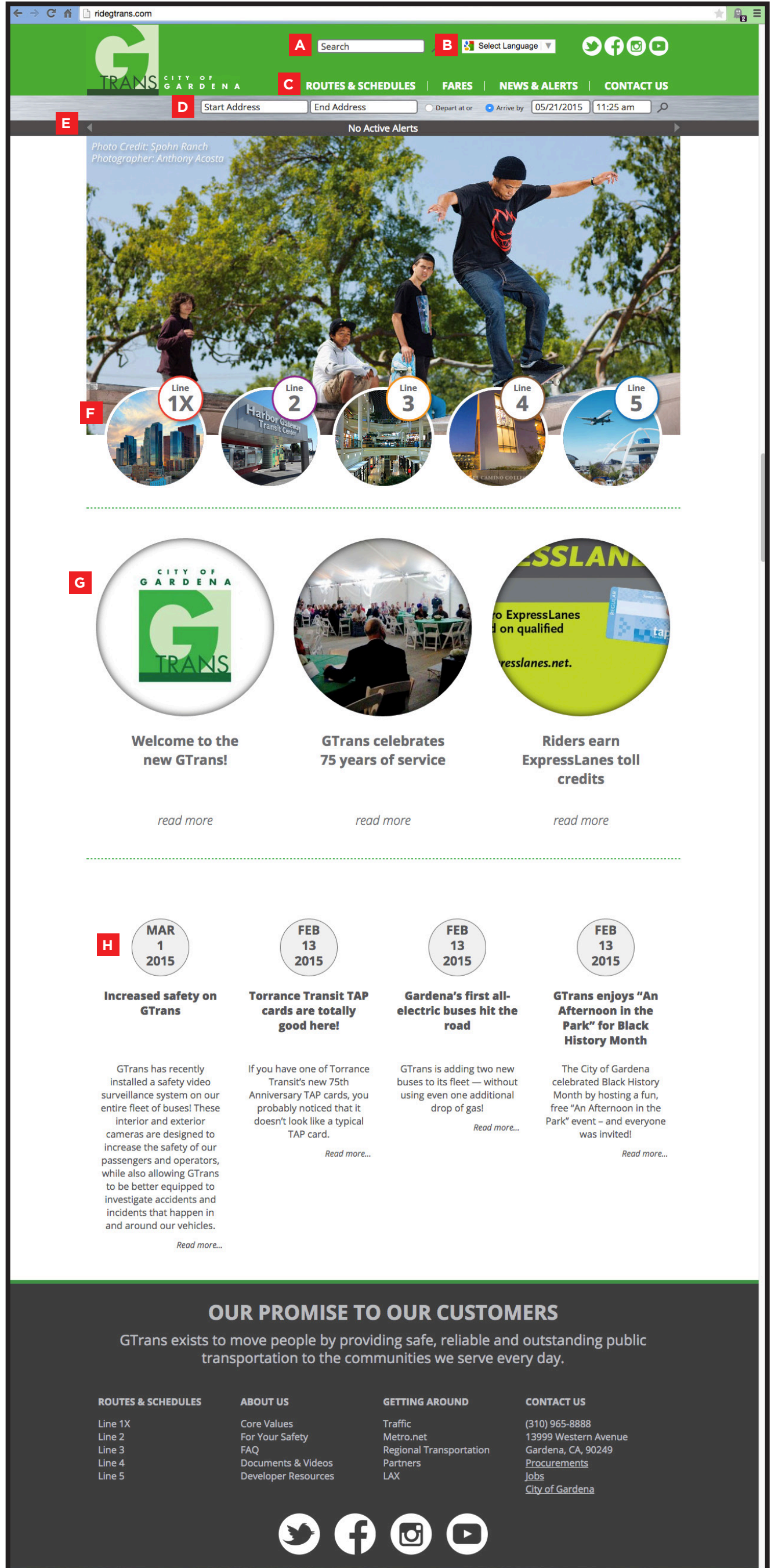


Objective: Hosted on the City of Gardena’s website, GTrans’ old website was text heavy, outdated, missing key features of modern websites, and not mobile-friendly. With it new brand, GTrans needed new website that was consistent with its new brand. Using a simple, eye-catching, and youthful design GTrans create a sleek new website that is modern and mobile-friendly.

- A** Website is search enabled
- B** Easy to click multi-lingual capability in compliance with Title IV
- C** Easy to navigate, roll over navigation bar.
- D** New Trip Planner
- E** Dynamic Rider Alerts scroll bar
- F** Easy to access and visually appealing line pages
- G** Eye catching feature stories
- H** Up-to-date news stories



It integrates new technology such as trip planner, interactive maps, live alerts, up-to-date news, and multi-lingual compatibility.

- A** Shows popular destinations along the line
- B** Easy access to Print and Share
- C** Interactive Google Map highlighting line route
- D** Dynamic line schedules

The screenshot shows the GTrans website for Line 1X. At the top, there is a navigation bar with 'GTRANS CITY OF GARDENA' and links for 'ROUTES & SCHEDULES', 'FARES', 'NEWS & ALERTS', and 'CONTACT US'. Below this is a search bar and a date/time selector set to '05/21/2015 11:46 am'. A 'No Active Alerts' message is displayed. The main heading is 'Line 1X Let's do downtown'. A circular image shows a city skyline. Below the heading, text describes the line's route and popular destinations. A Google Map shows the route from Hawthorne to downtown Los Angeles. A 'LINE SCHEDULE' table provides departure times for various stations. A 'Line 1X Mid-Day Service' note explains that service terminates at Harbor Transit Station during mid-day on weekdays and weekends. The footer contains 'OUR PROMISE TO OUR CUSTOMERS' and navigation links for routes, about us, getting around, and contact us.

LINE SCHEDULE

WEEKDAY NORTHBOUND	WEEKDAY SOUTHBOUND	WEEKEND NORTHBOUND	WEEKEND SOUTHBOUND
147th & Hawthorne	Marine & Western	Gardena & Vermont	Vermont & Rosecrans
Harbor Fwy Green Line Station	1st & Main*		
5:25	5:35	5:44	5:50
5:55	6:05	6:14	6:20
6:25	6:35	6:44	6:55
6:55	7:05	7:14	7:20
7:25	7:35	7:44	7:50
7:55	8:05	8:14	8:20
8:30	8:40	8:49	8:55
9:05	9:15	9:24	9:29
9:40	9:50	9:59	10:04
10:20	10:30	10:39	10:44
11:05	11:15	11:24	11:29
11:50	12:00	12:09	12:14
12:35	12:45	12:54	12:59
1:20	1:30	1:39	1:44
2:05	2:15	2:24	2:29
2:35	2:45	2:54	3:00
3:05	3:15	3:24	3:30
3:35	3:45	3:54	4:00
4:05	4:15	4:24	4:30
4:35	4:45	4:54	5:00
5:05	5:15	5:24	5:30
5:35	5:45	5:54	6:00
6:35	6:45	6:54	7:00
8:10	8:19	8:27	8:32

Line 1X Mid-Day Service
 During mid-day on weekdays and on weekends line 1X will terminate at Harbor Transit Station for connections to Metro service to Downtown.
 Durante el medio dia los dias de semana y en los fines de semana linea 1X se detiene en el Puerto de Harbor Fwy Green Line Station para conexiones con el servicio de Metro hacia el Centro.

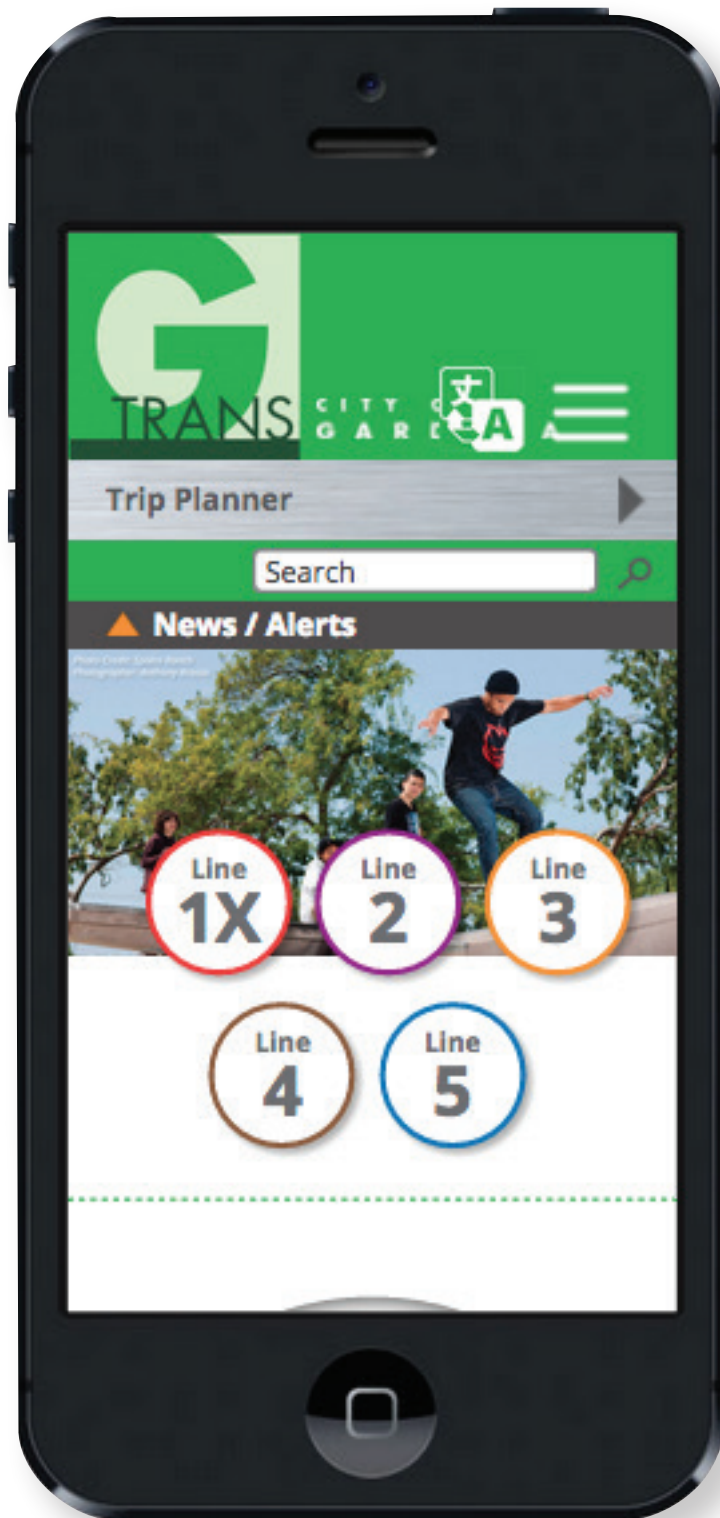
OUR PROMISE TO OUR CUSTOMERS
 GTrans exists to move people by providing safe, reliable and outstanding public transportation to the communities we serve every day.

ROUTES & SCHEDULES
 Line 1X
 Line 2
 Line 3
 Line 4
 Line 5

ABOUT US
 Core Values
 For Your Safety
 FAQ
 Documents & Videos
 Developer Resources

GETTING AROUND
 Traffic
 Metro.net
 Regional Transportation Partners
 LAX

CONTACT US
 (310) 965-8888
 13999 Western Avenue
 Gardena, CA, 90249
 Procurements
 Jobs
 City of Gardena



The use of smartphones and other mobile devices to access conventional websites has increased dramatically in recent years. GTrans new mobile friendly website allows riders to plan their trips, find alerts, and more on-the-go.